

KBS MAXX



**RUST
STOPS
HERE.**

PRODUCT FEATURES

- **MAXX**imum Gloss Retention
- **MAXX**imum Impact Resistance
- **MAXX**imum Weather Resistance
- Chemical Resistant
- Outstanding Adhesion
- Superb Opacity
- Excellent Flow
- Fast Drying
- Single Stage
- High Solids Coating
- Custom Colors Available
- Withstands Continuous Temperatures of up to 300-400°F.



**High Performance,
Ultra Durable 2K
Top Coat**

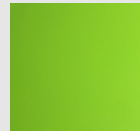


ALSO AVAILABLE IN CLEAR!



- **HIGH GLOSS CLEAR**
- **SATIN CLEAR**
- **FLAT CLEAR**

SUBLIME GREEN



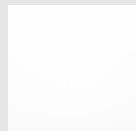
INFRA RED



PITCH BLACK



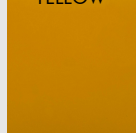
ARCTIC WHITE



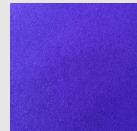
JD AG YELLOW



SCHOOL BUS YELLOW



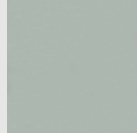
PLUM CRAZY



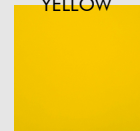
JD GREEN



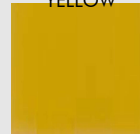
SMOKE GREY



DAYTONA YELLOW



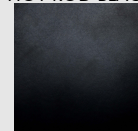
JD INDUSTRIAL YELLOW



BLUE MAYHAM



HOT ROD BLACK



ORANGE GLOW



SILVER METALLIC:
SATIN OR GLOSS



PROFESSIONAL USE ONLY

KBS-COATINGS.COM
1-877-548-9323

1101 CUMBERLAND XING #180
VALPARAISO, IN 46383





**RUST
STOPS
HERE.**

KBS MAXX is a superior performance, two-component, low VOC, low HAPs polyurethane topcoat. Specifically designed for the automotive, agricultural, fleet refinishing, marine and heavy industrial equipment markets.

KBS MAXX offers **excellent gloss & color retention** as well as **superior impact resistance**, while providing **fast drying characteristics**. An excellent coating for the OEM marketplace looking to provide an automotive quality look & finish in a single stage, two-component system.

APPLICATIONS

- Cars
- Motorcycles
- Wheels
- Bicycles
- Snow Plows
- Fleet & Municipal Vehicles
- Tractors
- Agricultural Equipment
- Construction Machinery
- Trains
- Boats & Yachts
- Personal Watercraft
- Woodwork
- Doors
- Aerospace



PROFESSIONAL USE ONLY

KBS-COATINGS.COM
1-877-548-9323

1101 CUMBERLAND XING #180
VALPARAISO, IN 46383

