

MOTOR COATER

ENGINE ENAMEL



**RUST
STOPS
HERE.**



High Temperature Engine Enamel

PRODUCT FEATURES

- Fast-Drying
- High Performance
- Extremely High Gloss
- High Quality Acrylic Enamel
- Brush Marks Flow Out
- Withstands Temperatures up to 450°F
- Matches OEM Standards
- Will Not Blister, Flake, Crack or Peel
- Oil, Transmission Fluid and Gas Resistant
- Great for Brake Calipers Too!

PROFESSIONAL USE ONLY

KBS-COATINGS.COM
1-877-548-9323

1101 CUMBERLAND XING #180
VALPARAISO, IN 46383



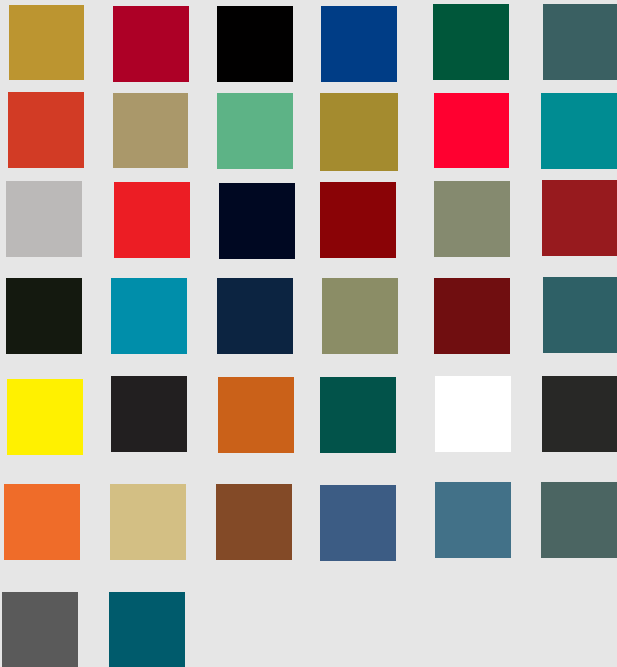
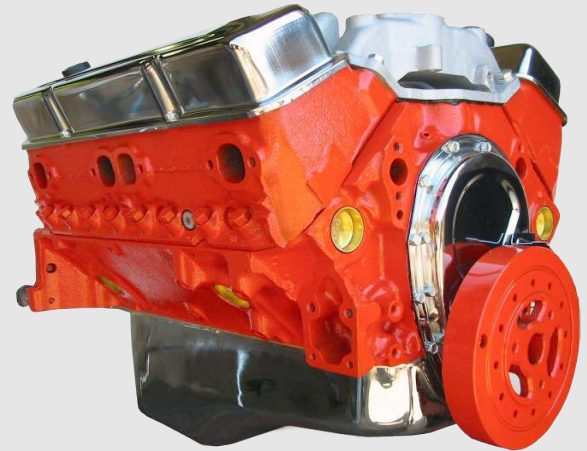


**RUST
STOPS
HERE.**

MOTOR COATER

Motor Coater is easy to apply, offers superb coverage and yields a self-leveling professional looking finish.

Your engine will be a show stopper at this DIY price...too bad it's kept under the hood!



Automotive Colors: Chevy Orange, Gloss Black, Aluminum, Ford Corporate Blue, T-Bird Red, Pontiac Metallic Blue, White, Street Hemi Orange, Fire Red, Ford Dark Blue, Daytona Yellow, Velvet Black, Ford Green, Chrysler Blue, Cadillac Dark Blue, Race Hemi Orange, Olds Gold, Olds Bronze, Chevy Blue, Pontiac Light Blue, Buick Green Late, Buick Red Late, MG Green, Buick Turquoise, Chrysler Turquoise, Austin Healey Moss Green Metallic, MG Maroon, Chevy Grey, Chevy Dark Charcoal, 64-67 Rampart Red, 68 Caravelle Metallic Blue, 69-72 AMC Engine Metallic Blue, 73-81 AMC Engine Blue, Torch Red.

Diesel Engine Colors: Detroit Diesel Alpine Green, Old Cummins Gold, Cummins Beige, Cat Yellow

APPLICATIONS

- Car • Tractor • Boat • Motorcycle
- ATV • Lawn Mower • Power Plants • Chainsaws



PROFESSIONAL USE ONLY

KBS-COATINGS.COM
1-877-548-9323

1101 CUMBERLAND XING #180
VALPARAISO, IN 46383

